

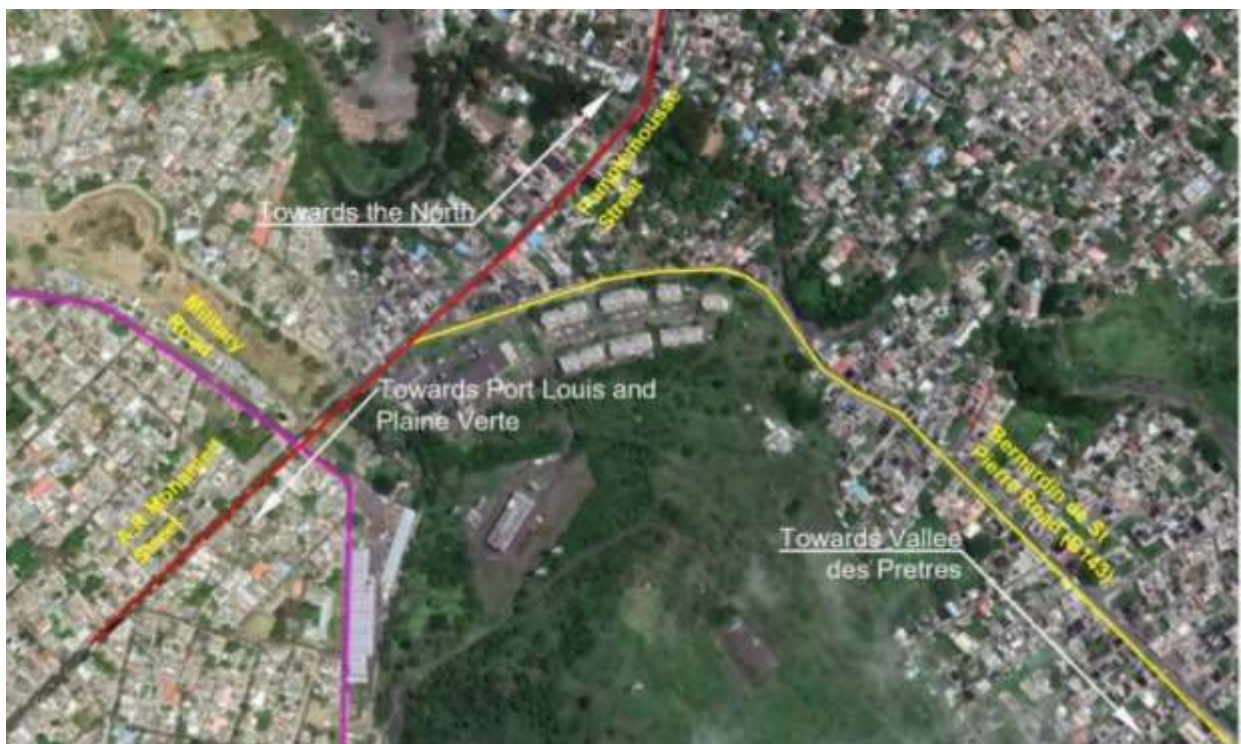


Traffic Congestion Relieving Measures at B32/B143 Junction (Vallee des Pretres Region)

Project Brief

1. Introduction

Vallee des Pretres is a highly built-up area, situated in Port Louis. Its main access and exit point is along Bernardin de St Pierre Road (B143) (shown in yellow in Figure 1), which connects to Abdool Razack Mohamed and Pamplémousse streets (B32) (shown in red).



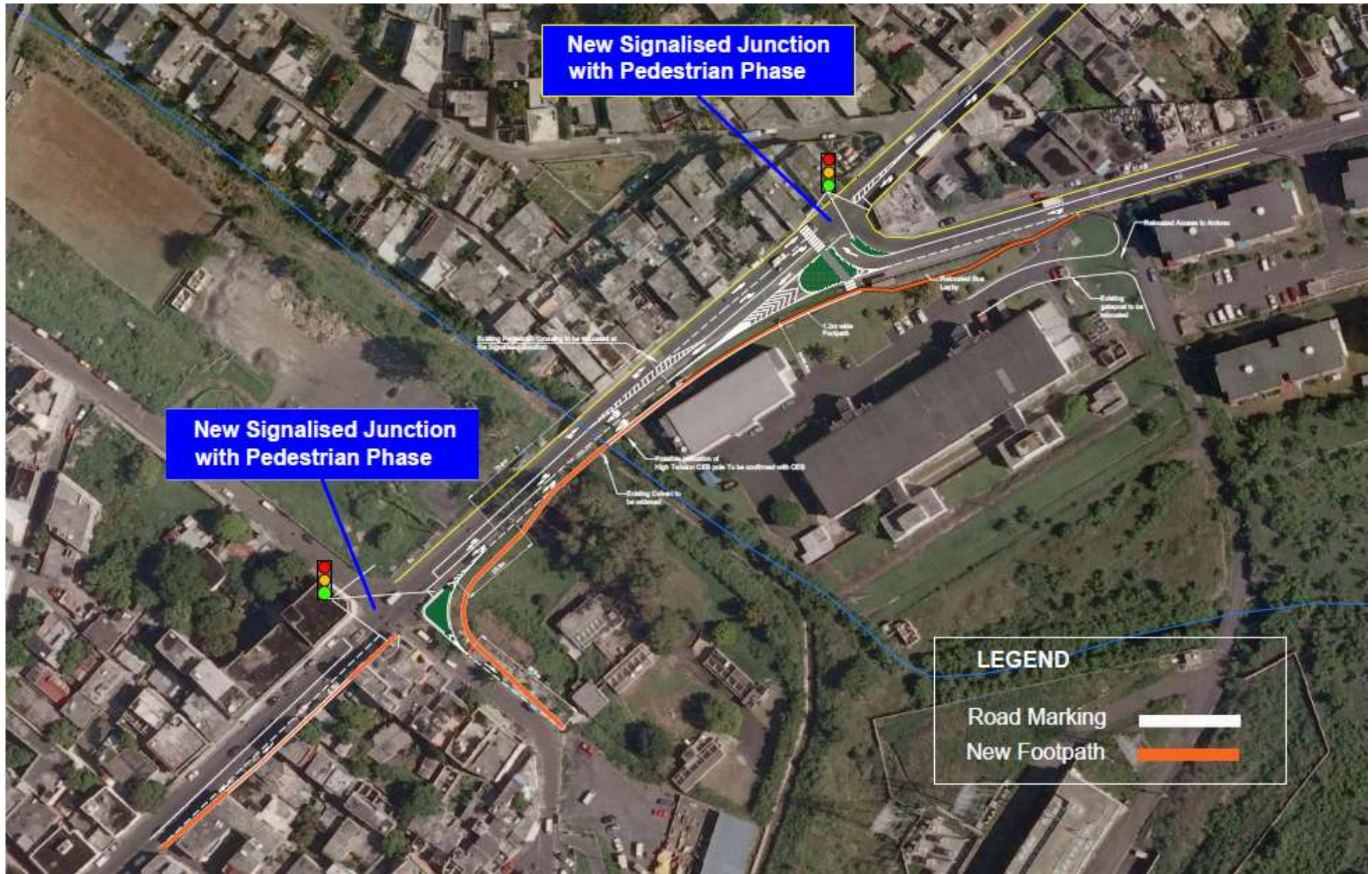
The second major junction in this region is the Military Road/A. R. Mohamed junction which connects Quay D to Vallee des Pretres, Cite Martial and Plaine Verte.

It is observed that both junctions operate beyond capacity during peak hours causing queuing along the main roads.

2. Proposed Project

In view to reduce traffic congestion at both junctions, RDA is implementing the following remedial measures:

- (i) Signalisation of existing junctions along B32 Road, that is, the Military Rd/A. R. Mohamed St junction and the Bernardin de St Pierre/A. R. Mohamed St junction.
- (ii) Provision of a right turning lane for vehicles heading towards Vallee des Pretres at the B32/B143 Junction.
- (iii) Construction of a dedicated slip lane which connects B143 to the Military Rd/A. R. Mohamed St junction, for traffic coming from Vallee des Pretres heading towards Plaine Verte.



3. Contract Details

Works Order	:04 July 2022
Contractor	:Gamma Construction Co. Ltd
Contract Value	:MUR 36,761,135.27 (VAT Incl)
Project Duration	:6 months
Contractual Start Date	:26 July 2022

The project scope is as follows:

- Construction of an additional lane along A. R. Mohamed Rd (slip lane approximately 350m long connecting Bernardin de St Pierre Road to Military Road), including footpath.
- Widening of existing B32/B143 junction for provision of right turning lane.
- Provision of traffic lights at the B32/B143 junction and B32/B140 junction.
- Construction of new access to Ambrex Ltd (including construction of a new security gatepost).
- Construction of new access to MSAW
- Relocation of existing bus layby.
- Relocation of existing services including CEB poles, Safe City camera, transformer room and sewer line.
- Widening of existing culvert
- Provision of necessary drainage structures.
- Provision of miscellaneous road furniture such as cat's eyes, handrails, street lighting, etc.

4. Actual Progress

- Liaison with authorities (utility service providers, forestry, City Council of Port Louis, etc) in progress.
- Site survey and setting out in progress.

