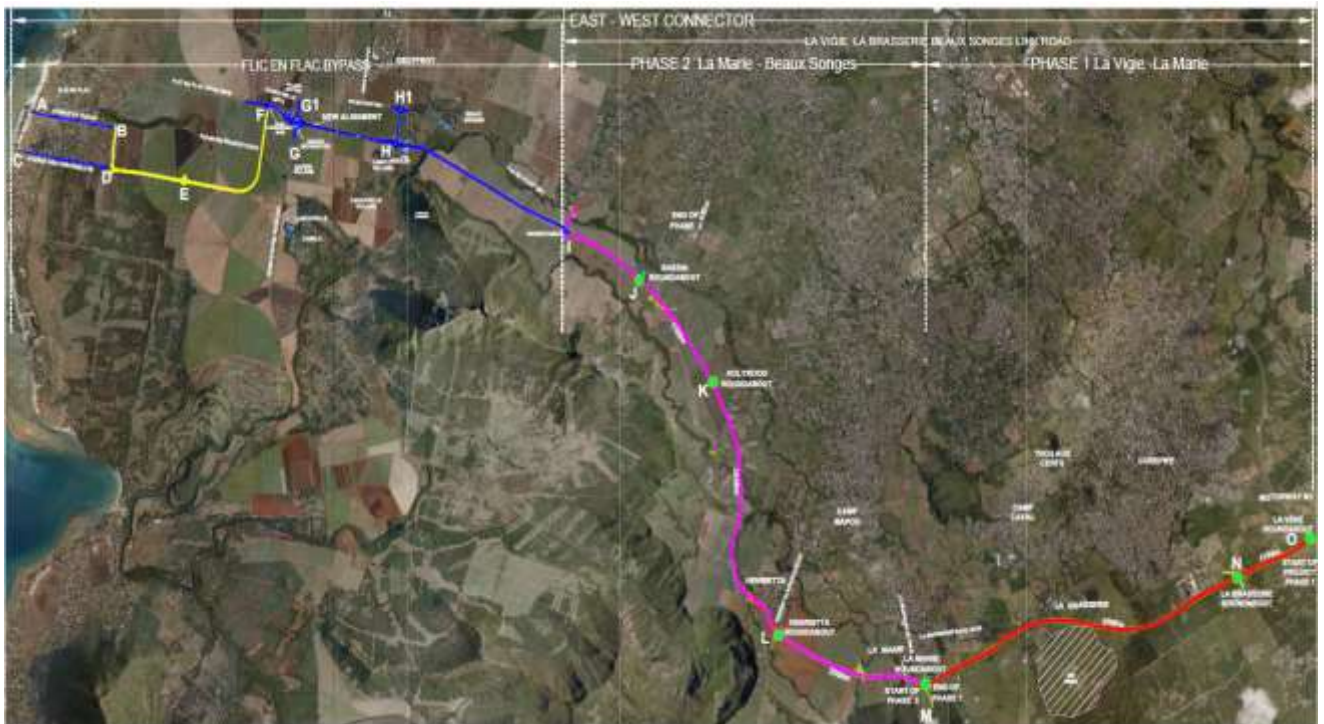


LA VIGIE-BEAUX SONGES LINK ROAD (PHASE 2) PROJECT

1. Background

With a view to sustain the development of infrastructure to support economic growth and benefit the society, the Government intends to establish an East-West Connector, as shown in the layout below, through the implementation of the following projects:

- I. La Vigie-La Brasserie-Beaux Songes Link Road - Phase 1 which starts from the Motorway M1 at La Vigie, crosses the Phoenix-Plaisance Road (A10) at 16eme Mille and ends on La Marie Road (B102) at La Marie.
- II. La Vigie-La Brasserie-Beaux Songes Link Road - Phase 2 which is a continuity from the Marie Road (B102) at La Marie, passes through Henrietta, Holyrood and ends at Pierrefonds. It is also to be highlighted that this new road will link the Palma Road (B2) and the Phoenix-Beau Songes Road (B130) i.e., improving accessibility to the regions of Palma, Bassin, Solferino amongst others; and
- III. The Flic-en-Flac Bypass.



2. Scope of works

The construction of La Vigie-La Brasserie-Beaux Songes Link Road - Phase 2 involves, amongst others, the following:

- Construction of approximately 9.5 Km of single carriageway each consisting of 7.0 metres wide carriageway and 1.5m wide paved shoulder on both sides in flexible pavement with a crushed stone sub base, with bituminous base course, a bituminous concrete wearing course together with a road reserve.
- High fill and embankment inclusive of surcharging and consolidation exercise.
- Construction of five concrete bridges, box culverts and provision of various drainage structures.
- Construction of four roundabouts and associated slip lanes.
- Provision of miscellaneous road equipment such as carriageway markings, traffic signs, handrails, safety fences, etc.
- Installation and commissioning of Street Lighting poles and luminaires.

3. Project Status

- The Central Procurement Board has approved the award of Contract to Beijing Construction Engineering Group Ltd (BCEG) for a sum of MUR 1,338,240,204.10 inclusive of VAT.
- The procurement proceedings are in progress.
- Works are expected to start in October 2022 and to be completed by October 2024.

4. Land Acquisition Status

- 79% of project land belongs to Medine for which access has been granted for the said works.
- The remaining 21% of lands (74 portions out of 104 portions which are of smaller extents) belong to other private owners. Land Acquisition is still on-going. The lands are to be handed over to the Contractor within 8 months after the Commencement of Works.