

ROAD DEVELOPMENT AUTHORITY

CONSTRUCTION OF AN INTERCHANGE AT HILLCREST ACROSS MOTORWAY M1- CPB/47/2018



July 2019



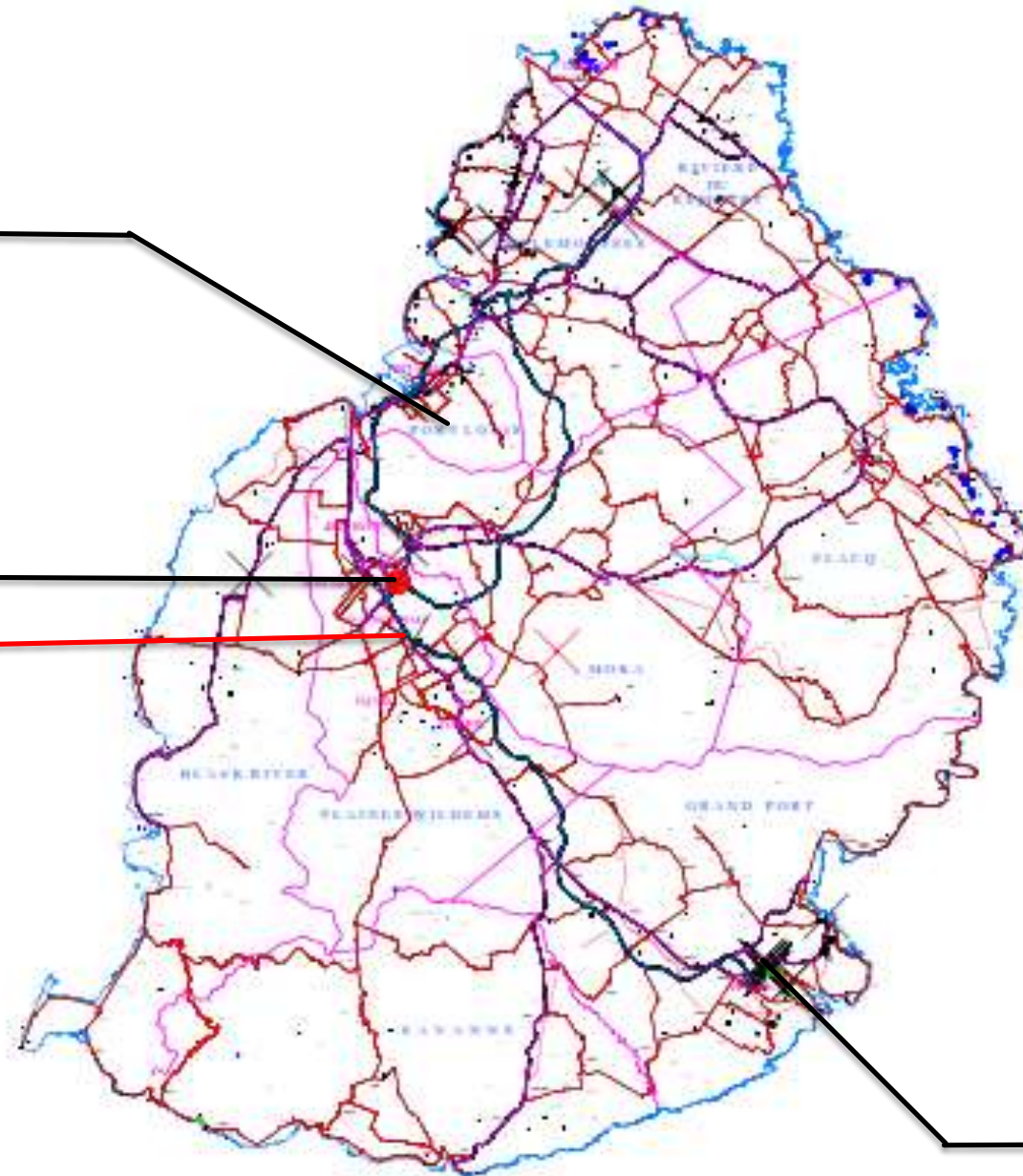
LOCATION PLAN

PORT LOUIS

EBENE

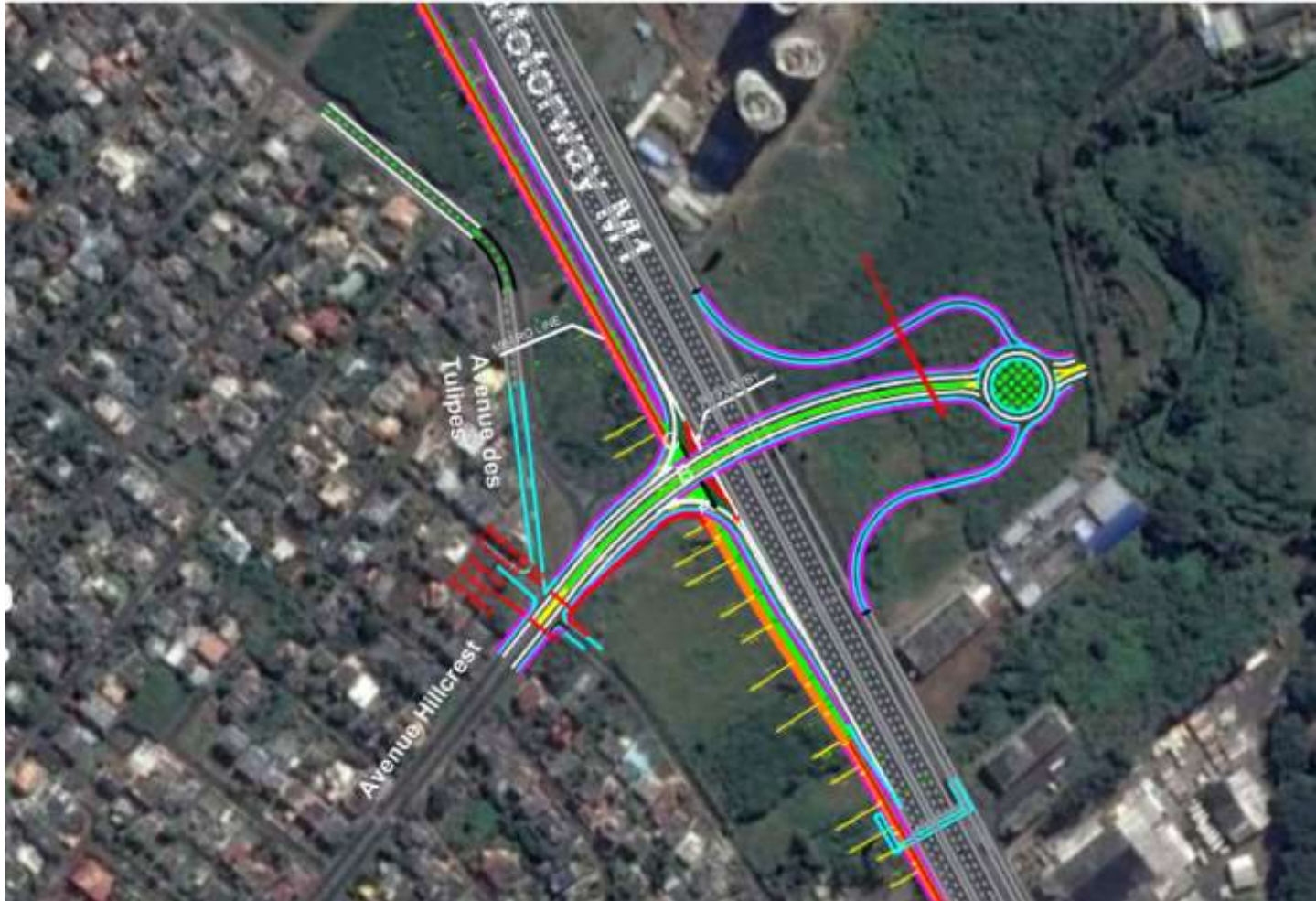
HILLCREST

SSR
AIRPORT



Proposed Solution

- To alleviate traffic congestion at St Jean, an interchange is being constructed across M1, at Hillcrest as an alternative route for vehicles entering and exiting Quatre Bornes



Project Benefits

- Ensure direct access to Quatre Bornes at Sodnac for vehicles coming from the North along Motorway M1 (bypassing St Jean Road A8).
- Allow vehicles to travel directly from Sodnac towards Phoenix Roundabout (bypassing the St Jean Roundabout).
- Ensure integration with the Metro Express Project for a proper and efficient transport network in the region of Quatre Bornes.
- Provision for future connection to Petit Camp and eventually to Terre Rouge Verdun Trianon link road

Project Overview

- **Method of Procurement:** Open International Bidding
- **Contract Awarded on 07th May 2019** under a **Design-Build/Turnkey Basis**
- **Contractor:** REHM GRINAKER Construction Co. Ltd
- **Project Value:** MUR 276,234,953.07 Excl. VAT
- **Contractual Start Date:** 04th June 2019
- **Contractual Completion Date:** 30th November 2020
- **Project Duration:** 18 months